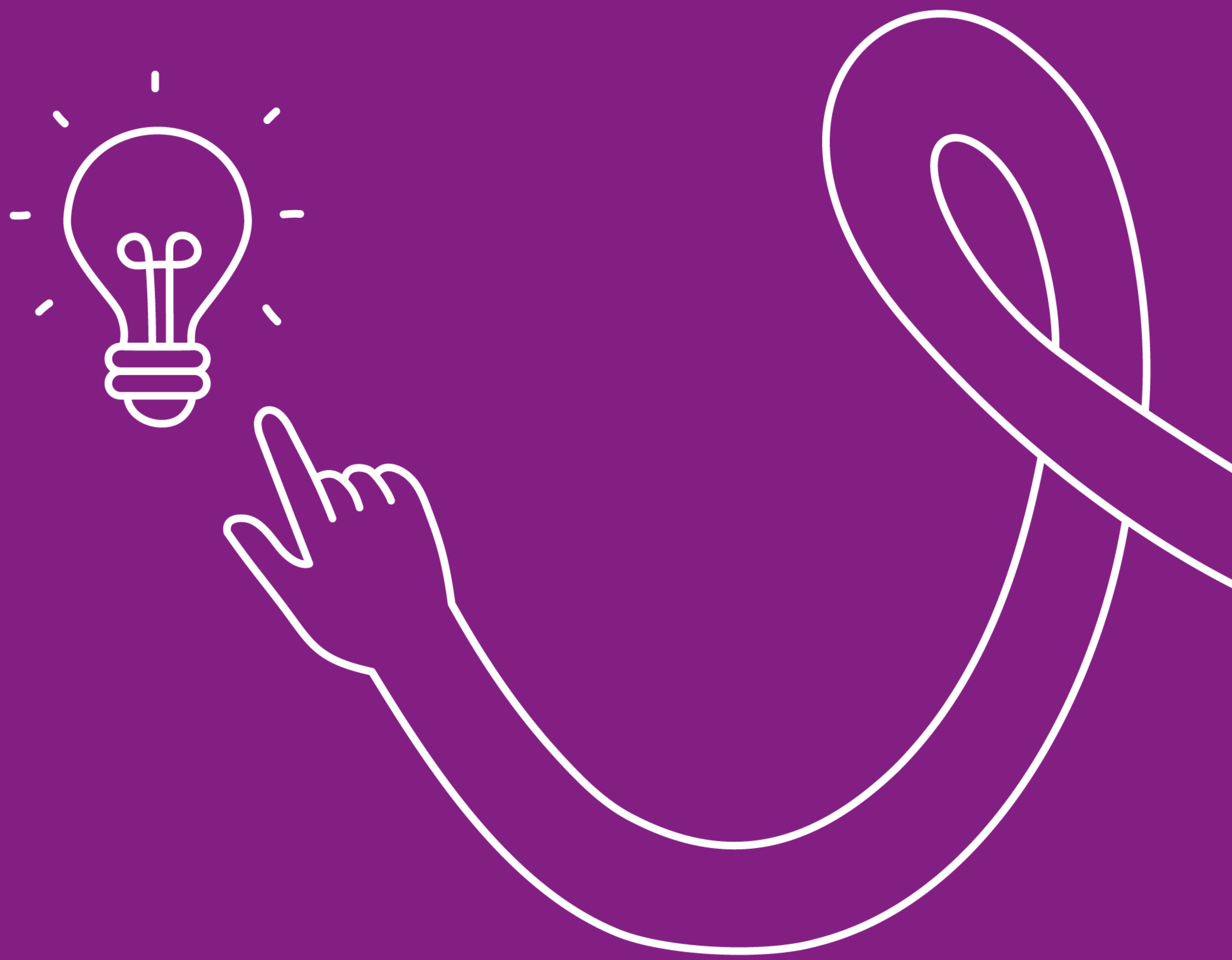


IREB survey

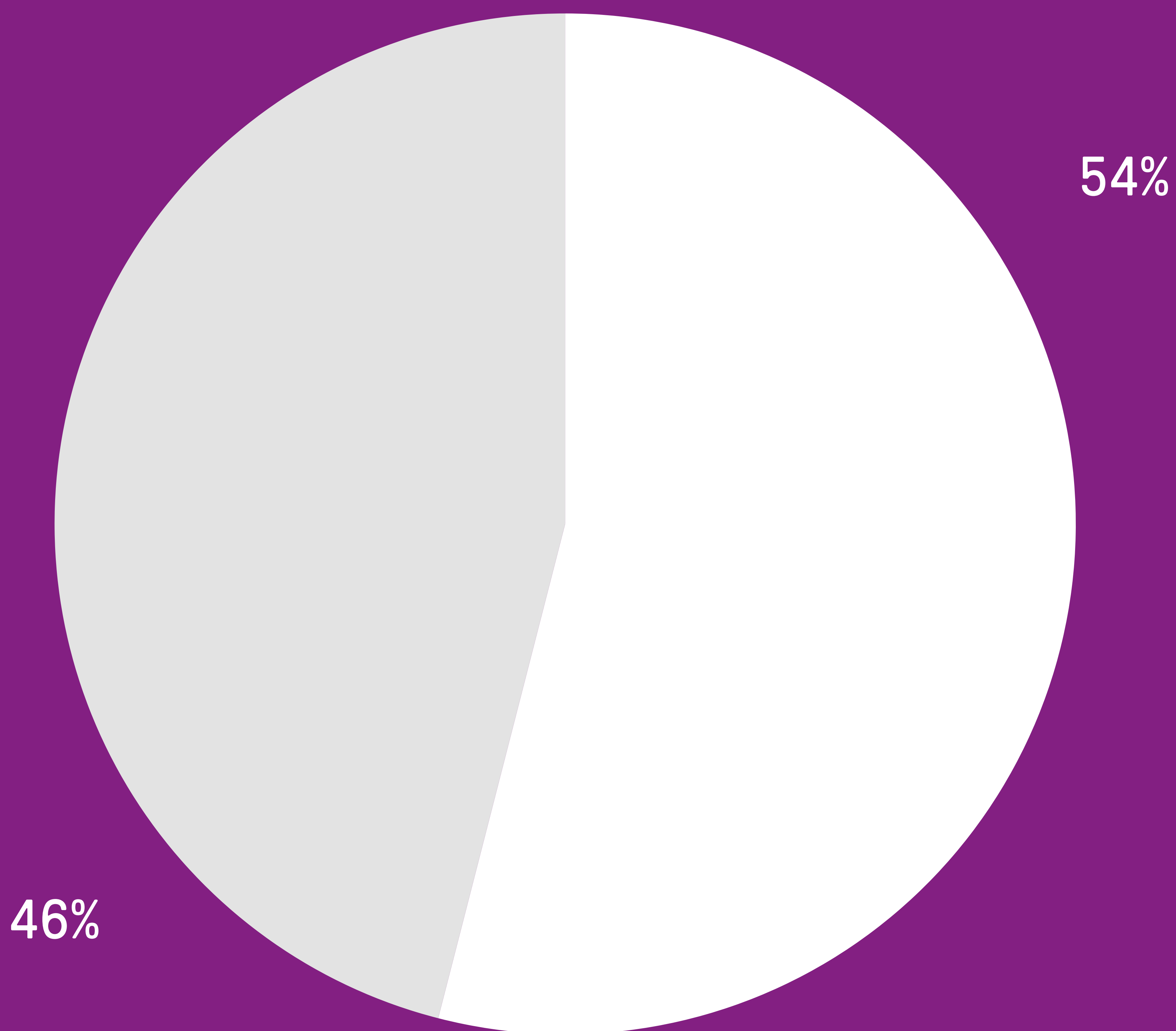
Sustainability survey



ireb.org

What describes your and your company's stance on integrating digital sustainability into RE and DD for all product and business decisions?*

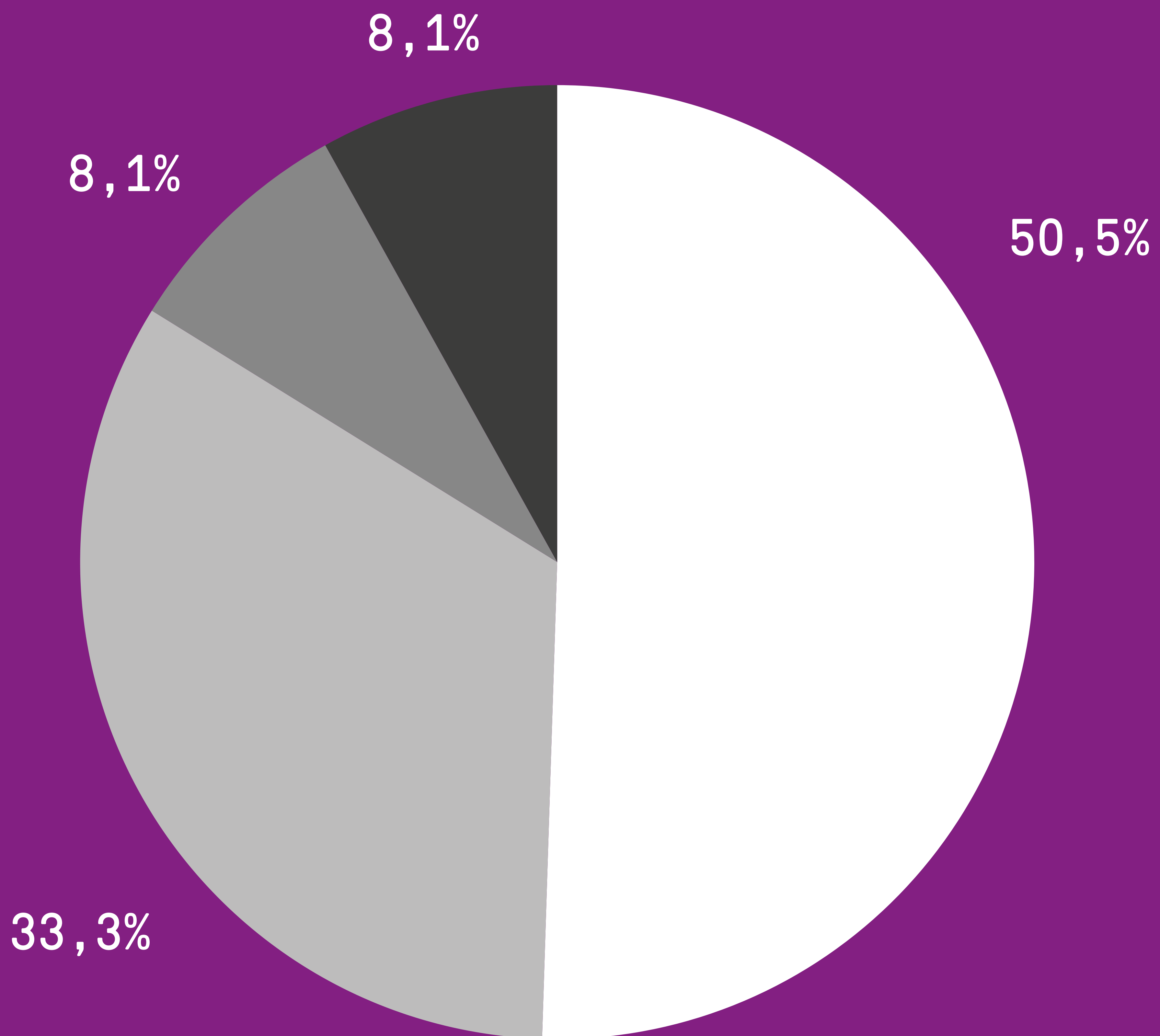
- Important to me & my company
- Important to me - not to them
- Important to them - not to me
- Unimportant to both of us



*13 participants

At which stage of the software development process do you consider sustainability aspects for your own products (in-house or external)?*

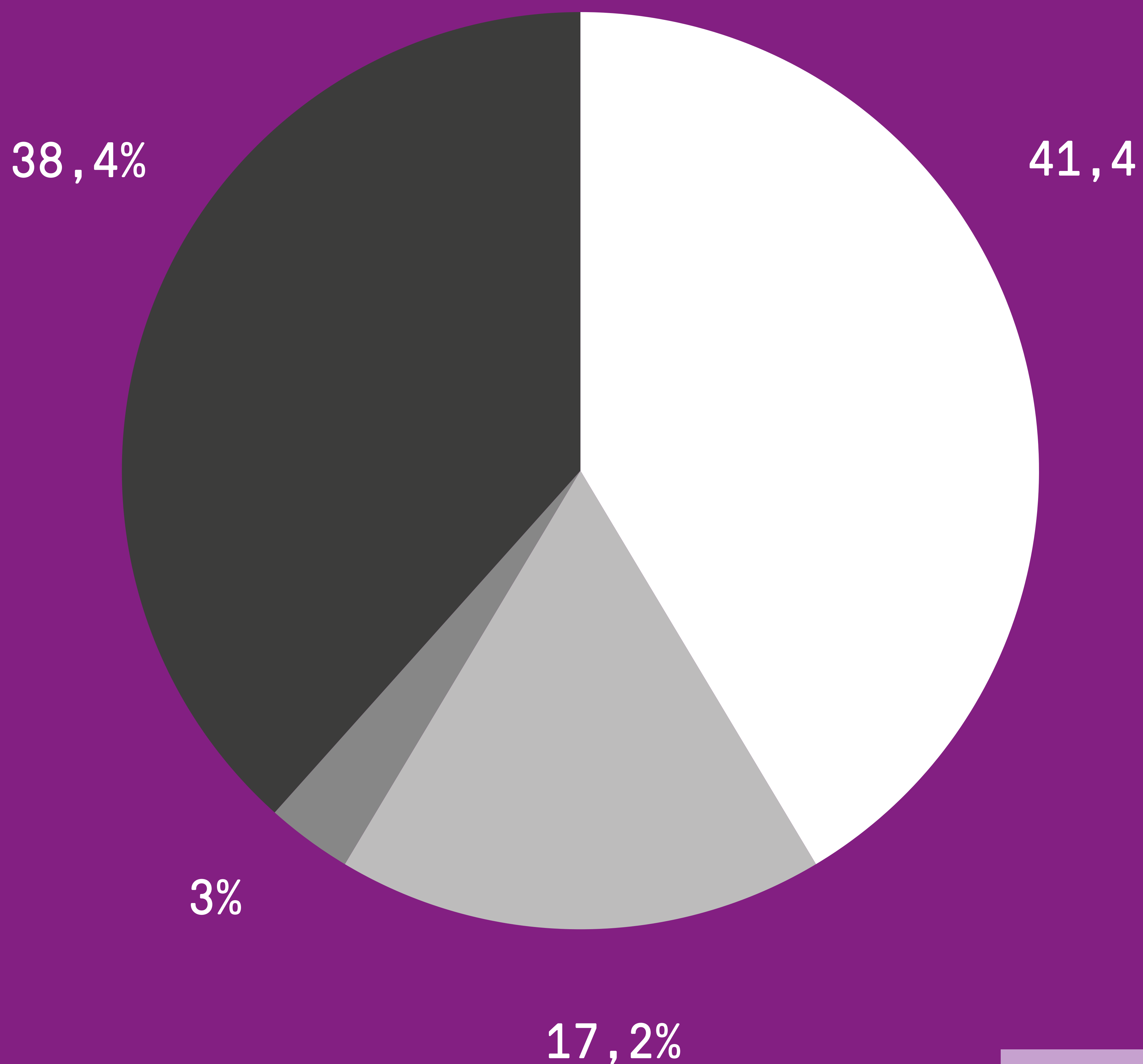
- Early-Stage (Initial Design)
- Mid-Stage (Development)
- End-Stage (Deployment)
- Retroactively



*12 participants

What are the main challenges your organization faces in integrating sustainability into software development?*

- Systems not designed for sustainability
- No good use case for sustainability
- No good sustainable suppliers
- Not a company priority



*28 participants

Contact

info@ireb.org

www.ireb.org